

# Prospectus 2020

## Policies, Rules and Regulations

### Vision

To be the greatest school in the area, functioning as a center of excellence providing a good education in a Christian environment;  
Combining Spiritual and Academic ..... to build a future for our children.

### Mission

- ❖ To provide a Christian environment in which teaching and learning can thrive
- ❖ To be a centre of academic excellence where quality teaching, practiced by highly qualified teachers, and quality learning by committed and dedicated learners , prevail
- ❖ To develop learners morally and socially through the life skills program and the art and culture activities
- ❖ To exploit the tranquil country setting to the benefit of the learners, to unlock the learners God-given potential
  
- ❖ To apply biblical principals as stated in the Word of God in all facets of school life
- ❖ To build the learners spiritually through weekly church services as well as Religious Instruction
- ❖ To prepare learners to make an impact in the world
- ❖ To help the learners in their quest to obtain the nature and character of Jesus Christ

**The School's Motto: Holiness**

# HOLINESS

In God's Self existence, Holiness was part of this existence.

He then created cherubims to sing the eternal song ... HOLY ... HOLY ... HOLY ... in the Old Testament "3 times Holy".

He then shed He's blood and added to His song. Cherubims now don't sing only 3 times the Holiness of God, but they sing it day and night over the Holy Blood. They don't sing a Love song but a Holy Song!  
Because Love emanates out of Holiness ..... Love's ending is in Holiness.

Therefore God's judgments' are God's Holiness in action.  
He judges because His Holiness is undermined.  
Sin undermines God's Holiness and that brings His wrath. There is no stay of execution.

So He had to birth Love & Grace to stop Him consuming sinners in His Holiness. Therefore the Headstone of Love cries Grace, Grace! Not only once, but twice. It ends in the Holiness of God.  
So the only way to see God is by His Holiness and not by His Love.  
He loved the rich man, but could not save him because His Holiness was interrupted.

God's Judgements ... is God's Holiness in action.

HOLINESS is God's Word Fulfilled (Manifested).

*By Apostle Edgar H Roscoe*  
Chairman of the College Governing Body

## ***CORE VALUES***

- FAITH:** To believe that someday God will bring him in .....  
Love on the Battle Field
- VIRTUE:** In yourself to let it go out to him in kindness.....  
Love that goes out to the society
- KNOWLEDGE:** To try and understand what he believes.....  
Love in response ready to answer
- TEMPERANCE:** To answer in kindness when he has spoken against you.....  
Love in Training the Tongue
- PATIENCE:** To endure with him.....  
Love in all Situations
- GODLINESS:** Not to rile back at him.....  
Love in completeness
- BROTHERLY KINDNESS:** To put yourself in his place in the matter.....  
Love in action
- CHARITY:** He will then see Christ in you, the Hope of Glory.  
The Holy Ghost is Love Itself
- HONESTY:** The very centre of Love
- RESPECT:** The burglar bars of Love
- HUMILITY:** The pillars of Love
- OTHERS:** To live for others..... Eternal Life is to live for others

### **4 Aspects of the Holy Ghost**

- 1. Word** – Believe the Whole Word. Word in Season  
3<sup>rd</sup> Pillar of the school
- 2. Life** – Live a life. Love – fruit of the Spirit  
7<sup>th</sup> Pillar of the school (Core Values)
- 3. Joy** – Worship, shouting, jumping, dancing  
Hard anointing – emotions (J.O.Y. – Jesus, Others and You)  
6<sup>th</sup> Pillar of the school
- 4. Crying and sighing** – Weeping and crying. Prays and cries.  
Soft anointing - emotions  
5<sup>th</sup> Pillar of the school

# SEVEN PILLARS OF THE SCHOOL

## 1. HEART

### GIVE YOUR HEART TO THE LORD

**Acts 2:37** Men and brethren, **What shall we do to be saved?**  
**Acts 2:37** **Repent and be baptized**, every one of you (of your sins)  
Make up your mind

## 2. MIND

### MUST BE BORN AGAIN

**John 3:8** The wind bloweth where it listeth (wants)...  
So is everyone that is born of the spirit – Baptism of the Holy Ghost  
**Acts 2:2** There came a sound of heaven as of  
**A RUSHING MIGHTY WIND**

**Romans 12:2** Be ye transformed by the renewing of your mind

## 3. WORD

### OBEY GOD'S MESSAGE

**Psalms 119:11** They word have I hid in my heart, that I might not sin against thee  
**Psalms 1:2** But his delight is in the law of the Lord and in His law doth he meditate day and night

### READ IT DAILY

## 4. PROPHET

### RESPECTS TO GOD'S SERVANTS

**Psalms 105:15** Touch not mine anointed, and do my prophets no harm  
**Matthew 10:41** He that receiveth a prophet in the name of a prophet, shall receive the prophet's reward.

## 5. PRAYER

### PRAYER AND FASTING

You never out of order when you pray. Pray at least 4 times a day

**Luke 18:1** Men ought to pray always, and not faint  
**1Thes 5:17** Pray without ceasing.  
**Acts 12:5** Prayer was made without ceasing (stopping)  
You can never pray too much – you can pray unlimited times per day.

## 6. TESTIFY

### THE MESSAGE - GO TELL

**Matthew 28:19** Go ye therefore, and teach ALL nations

**Teach them about JESUS**, the greatest of them all!

Do it with boldness – Don't be afraid

He is greater than Mohammed

He is greater than Buddha

He is greater than all the great man that walketh the earth

**BECAUSE HE IS GOD**

**Colossians 1:6** For by him all things created, that are in heaven, and that are in the earth, visible and invisible, whether they be thrones, or dominions, or principalities, or powers: all things were created by him and for Him.

**SAY THIS TWICE**

## 7. CHARACTER

### SEE THAT YOU GET AND DISPLAY THE CHARACTER OF JESUS CHRIST

**2 PET: 1:7** become partakers of his Divine Nature

**DIVINE NATURE = 7 THINGS**

FAITH  
VIRTURE  
KNOWLEDGE  
TEMPERANCE  
PATIENCE  
GODLINESS  
BROTHERLY KINDNESS  
CHARITY

Always the least – Esteem your brother & sister higher than yourself

Let the world know that you have been with Jesus

### FIVE DEFINITE IDENTIFICATIONS OF THE TRUE CHURCH

#### 1. WHAT IS THE CHURCH?

The called out to serve in another Kingdom. The mystical Body of Christ

#### 2. WHO SET IT UP?

Jesus Christ set it up – He is the Head of this mystical Body

#### 3. WHAT IS ITS MESSAGE?

Repentance, Jesus is King; Christ is the same yesterday, today & forever

#### 4. HOW DO WE BECOME A MEMBER OF IT?

You're born into it by the King of this Messianic Kingdom

#### 5. CAN WE GET TO HEAVEN WITHOUT BEING A MEMBER OF IT?

You cannot get to heaven without being a member of this true Church.

## APPLICATION PROCESS

### Steps to follow to register for the 2020 academic year

1. Parents and child **read and study** the Prospectus 2020. Acquaint yourselves with the Rules, Regulations and Policies of the school/hostel.
2. Complete the “**Application for Admission 2020**” forms available from the school’s administration office or download from the website
3. Detach “**Pastor’s Reference Form**” and hand over to your Pastor to complete. Pastor complete and send it directly to the school or parent return the form in a sealed envelope.
4. Detach “**Academic and Behaviour Reference Form**” and “**Finance Clearance Form**” and hand over to the learner’s current school to complete. Principal complete and send it directly to the school or parent return the form in a sealed envelope.
5. Parent submit all the forms and documentation and pay the non-refundable **R1000 Application / Registration Fee**. (See page 38 Registration Requirements)
6. School process application
7. The learner and parents can be called for an interview if deemed necessary.
8. School issue letter of admission / non-acceptance within 21 days after the receipt of all the outstanding forms and documents. Parents can expect a response by 20 September 2019 . The letter will be posted, faxed or e-mailed.

### Start of the new academic year 2020

9. 3<sup>rd</sup> January 2020, School fee for January due and to be paid.  
Hostel fee for 1<sup>st</sup> term due and to be paid.
10. **School administration office re-opens on Thursday 09 January 2020** to process late re-registrations and new registrations (between 09:00 – 13:00).
11. School re-opens, Wednesday, 15 January 2019  
Hostel learners report on Tuesday 14 January 2019 from 16:00 -19:00

COMBINING SPIRITUAL AND ACADEMIC ..... BUILDING A FUTURE FOR OUR CHILDREN!

## EL TABERNACLE **CHRISTIAN** COLLEGE

This is a **Christian School**  
With a **Christian Ethos, Beliefs and Values**  
For **Christian Parents**  
Enrolling **Christian children.**

### **WE ARE NOT A REHABILITATION CENTRE!!!**

Parents should not enroll learners at the school with pending court cases or learners that are involved in criminal activities. The school is not a safe, hiding place for criminal elements.

### **WE ARE NOT A REHABILITATION CENTRE!!!**

The school is not for street wise kids, but for children with a desire for God and the things of God.

### **WE ARE NOT A REHABILITATION CENTRE!!!**

The school and hostel premises is a weapon free, cigarette free, alcohol free, drug free and pornography free zone.

Learners must not under any circumstance participate in alcohol or habit forming drug usage or party to such usage (substance abuse).

### **WE ARE NOT A REHABILITATION CENTRE!!!**

We do not have the resources, manpower (psychologists, counselors, therapists and social workers) or facilities to deal with addicts and substance abuse enslavement.

The school does not have a psychiatric nurse to observe, monitor and or treat learners with mental and personality disorders.

### **Institute of Learning in a Biblical, Holy Ghost Environment!!!**

It is an institution of learning in a Christian environment; where The Holy Spirit and the Word of God have the preeminence.

Only learners, who behave Christ-like, will be accepted. They must show respect to God and have a desire for the things of the Lord, a desire to serve God.

In essence, the school/hostel is there to provide an environment where: (i) learners can express themselves spiritually (ii) feel free to walk with the Bible and to read it (iii) pray as often as they like (iv) easier to serve God (v) save their souls (vi) keep their souls saved until the Coming of the Lord.

## EL TABERNACLE CHRISTIAN COLLEGE

### RELIGIOUS POLICY

The 1996 Constitution of the RSA section 29 provides for the establishment of the independent schools of the basis of common culture and religion provided that they do not discriminate on the basis of race. The collective right of the school which is joined by a common Christian purpose is more persuasive than the right of the individual.

#### **Raison d'être of the College (Rationale/Purpose)**

This policy forms one of the major cornerstones of the School. It contains the raison d'être of the School. The religious nature of the school and custom and religious instruction and worship lie at the very heart of this private Christian school. The policy is based on the doctrine of El Tabernacle. The School provides an environment where teachers and learners can express their faith openly, practice their beliefs and be less persuaded by friends to commit sin and to be free from worldly influences. The Christian School is another major effort in this God forgotten age and generation of moral decay and degradation, to keep the young people saved until Jesus comes.

- ❖ The College's right to exist hinges on the maintenance of the overriding Christian and moral ethos of the School
- ❖ All efforts should be made to preserve the Christian character of the School.

The ministry (Apostolic-Prophetic) sets the tone for the school and the prevailing inspiration must influence the way things are done directly. The direction the school takes will be a direct consequence of the Gift of Wisdom (discernment) in the church. No church can thrive outside of the Supernatural. Since the Supernatural cannot be captured on paper, it can only be stated that the school cannot thrive outside of the Supernatural.

#### **INFLUENCE**

Learners will associate with people of like precious faith. Outside, worldly influence will be closely monitored and eradicated. Children will also be free from the pressure and criticism they suffer due to their belief system, and especially the dress code, at other private and public schools.

Since teachers are very important role models, their influence is paramount in the development of the child. A teacher should preferably be a Born Again, Spirit Filled, Christian. Preference will be given to the appointment of teachers that are members of El Tabernacle.

Serious departure from El Tabernacle standards by a teacher cannot be isolated from his or her duties since within El Tabernacle Christian College Religious instruction, influence and example form an important part of the Education process.

The Principal, Teachers and the Parents through the CGB must ensure that the influence of the Pastor and the Holy Ghost Ministry prevail at the school, and in the children's lives.

#### **CHRISTIAN ENVIRONMENT**

The school and hostel is not a rehabilitation centre. It is an institution of learning in a Christian environment; where The Holy Spirit and the Word of God have the preeminence.

Only learners, who behave Christ-like, will be accepted. They must show respect to God and have a desire for the things of the Lord, a desire to serve God.

In essence, the school/hostel is there to provide an environment where: (i) learners can express themselves spiritually (ii) feel free to walk with the Bible and to read it (iii) pray as often as they like (iv) easier to serve God (v) save their souls (vi) keep their souls saved until the Coming of the Lord.



**COMBINING SPIRITUAL AND ACADEMIC ..... BUILDING A FUTURE FOR OUR CHILDREN!**

**DAILY STAFF GATHERINGS**

It is compulsory for staff to attend. The daily morning gathering in the staff room shall start with prayer and scripture reading.

**REGISTER PERIOD**

It is compulsory for learners to attend. The school day shall start (in every class room) with a scripture reading and prayer and it shall end with a prayer. Prayer and the scripture reading shall be done by the teacher and/or learners.

**ASSEMBLY**

It is compulsory for staff and learners to attend. If the school day should start with an assembly, it shall start with a scripture reading and prayer. Prayer and the scripture reading shall be done by the teacher and/or learners.

**YOUTH SERVICES**

It is compulsory for staff and learners to attend. Staff and learners are encouraged to partake actively in the services. The youth service will be held once weekly, preferably on a Friday to spread the services throughout the week (Sunday service and Wednesday prayer meeting)

**OTHER RELIGIOUS GATHERINGS AND ACTIVITIES**

It is compulsory for staff and learners to attend. A learner must partake in at least one spiritual extra-curricula activity.

Learners must know the seven pillars of the school by heart. There must be a constant reference to the pillars throughout religious activities.

**RELIGIOUS INSTRUCTION/EDUCATION**

It is compulsory for staff and learners to attend. Compulsory Christian Education will be scheduled at least twice a week for each class group. The syllabus should reflect (i) Bible teaching (ii) Message of the Prophet (iii) El Tabernacle Holy Ghost Ministry teachings. Learners will be examined (preferably through continuous assessment) and the mark will reflect on the child's quarterly progress report

**THE HOLY BIBLE**

Learners must always carry a bible on them. Whenever they get a chance they must read from the Scriptures. During break on the playground they must place their Bibles at the designated places.

**CHRIST-CENTERED (BIBLE CENTERED) CURRICULUM**

The school will phase in a Christ-centered (Bible-centered) curriculum. Combining Spiritual and Academic to build a future for our children.

**CHOIR**

The choir's repertoire shall be Hymns, Choruses, Psalms, Gospel Music and Spiritual songs. This will be applicable for practice sessions as well as renditions during functions, assembly and the youth services.

**BRASS BAND**

The choir's repertoire shall be Hymns, Choruses, Psalms, Gospel Music and Spiritual songs. This will be applicable for practice sessions as well as renditions during functions, assembly and the youth services. The ultimate aim is to establish a brass band that can play during church services at EL Tabernacle.

**DRESS CODE**

The dress code of El Tabernacle shall be applicable to learners, teachers and other staff members.

### **CLOUD OF HOFFMAN'S HEAD OF CHRIST**

The cloud with the head of Christ is a thoroughbred insignia of El Tabernacle. The CGB must ensure that every classroom and staff room is furnished with one against the front wall. This will also remind the learners that they are occupying sacred ground. Learners must be reminded that the Sanctuary is adjacent to the school. Each classroom must display the Angel guarding the bridge as 2 children cross it. The learners must be constantly reminded of the spiritual significance.

### **OTHER FAITHS AND RELIGIONS**

Teachers who choose to teach at this Christian College, and parents who choose to send their children to this Christian College which has a specific Christian Belief system, Recognise and Accept the School's religious policy. This does not mean to say that they may not be of a difference religion or are prohibited from practicing that religion outside the school boundaries.

### **APOSTLE AND HIS FAMILY**

Since the Apostle is the Spiritual leader, it is expected that all staff members and learners should always bestow the utmost respect and honour upon him and his family.

---

## **Illness at School, Physical & Health of Learner**

Parents will be informed telephonically in cases where the child is ill. It is the parents' responsibility to take the learner to the doctor.

As in the past with minor or emergency cases, learners will still be referred to the doctor, clinic or hospital for treatment. Remember it is for the parents account. Parents will be informed if the learner took ill. It is their responsibility to take the child to a physician.

### **Medication**

- According to law only a qualified and registered medical practitioner can prescribe medication. The staff can only supervise the administering of medicine that the child brings to the school.
- Parents are advised not to enroll learners with serious medical conditions at the school.
- This includes conditions where medication must be administered on a regular basis under adult supervision and where the child must be monitored on a daily basis.
- Parents must discuss the medical condition with the principal first, before enrolling the child.
- Learners must be in possession of their chronic medication at all times e.g. asthma pump

### **Mental Health**

- The school do not have the capacity to accommodate learners with mental and personality disorders. It also does not envisage it as part of its bouquet of services rendered.
- Parents are advised not to enroll learners suffering with depression, bipolar or any kind of mood disorders.
- Parents are advised not to enroll learners that are under psychiatric treatment and prescriptive drugs. The school does not have any therapist or psychiatric nurse in its employ to accommodate this type of learner.

### **Drug Screening Test**

- The school reserves the right to ask parents to send a learner for a drug screening test for certain drug classes and/or a comprehensive drug test.
- The screening results/toxicology report must be submitted to the school.

## FINANCIAL POLICY 2020

The under mentioned policy will be strictly adhered to and has been approved by the College Governing Body in order to ensure the continued financial viability of the school:

### A. GENERAL

1. All tuition fees must be paid **in full, in advance and it is due by the 3<sup>rd</sup> of each month i.e. 3<sup>rd</sup> January, 3<sup>rd</sup> February, 3<sup>rd</sup> March, 3<sup>rd</sup> April, 3<sup>rd</sup> May, 3<sup>rd</sup> June, 3<sup>rd</sup> July, 3<sup>rd</sup> August, 3<sup>rd</sup> September , 3<sup>rd</sup> October and 3<sup>rd</sup> November.**
2. If the full annual tuition is paid **by the 31<sup>st</sup> January**, a discount will be granted.
3. It is the parents/guardians responsibility to ensure that fees are paid by the due date to save the school administration staff from spending valuable time following up on non payment of accounts.
4. Failure to comply with the above will unfortunately result in your account being handed over to the school's attorneys for collection and pupil's tuition will be suspended.
5. One full quarters notice in advance must be submitted in writing **before** removing the child from the school, failing which, the parent/guardian will be responsible for the payment of the applicable fees.
6. Any other discounts granted at the discretion of the Governing Body.
7. A non-refundable application/registration fee of R800 is payable with the submission of the application form.
8. Parents are advised to arrange with their bank to pay the tuition fees by means of debit order. **Compulsory to arrange for monthly debit order payments.**
9. In the event of the School, the Governing Body or the Principal, on behalf of either, having to take legal action, then in the event thereof, the parent/legal guardian/signatory shall become liable for all legal costs incurred on an attorney's client scale, including collection, commission occasioned thereby.
10. Unpaid school fees will result in your child being denied tuition and legal action will be taken. Your child's progress report and transfer card will be held back until all outstanding school fees are paid up.
11. The learner's tuition will be suspended if the school fee account is in arrears for two months. (Learner will be suspended from school).
12. **It is compulsory for parents to support all fundraisers.** Failure to support will result in the school fee account being debited with the predetermined obligatory amount to be contributed by the parent.

### B. DEBT COLLECTION

- All tuition fees must be paid **in full, in advance** and it is **due by the 3<sup>rd</sup> of each month.** School / Hostel fees must be **paid in advance.**
- A **R30** administration fee will be charged per SMS, telephone call or letter. The school will debit your account each time we remind you to settle your account e.g. First a telephone call @ R30, followed by an SMS @ R30 lastly a written reminder @ R30. This will be done after the **7<sup>th</sup>, 14<sup>th</sup> and 21<sup>st</sup> of each month.** Your account is due by the 3<sup>rd</sup>. It will be charged automatically with each reminder.
- **After the 3<sup>rd</sup> your account will be classified as in arrears (amount outstanding)!**
- In the event of the School, the Governing Body or the Principal, on behalf of either, having to take legal action, then in the event thereof, the parent/legal guardian/signatory shall become liable for all legal costs incurred on an attorney and client scale, including collection, commission occasioned thereby.

## COMBINING SPIRITUAL AND ACADEMIC ..... BUILDING A FUTURE FOR OUR CHILDREN!

- **Interest** will be charged at **3% per month** on school and hostel fees not settled by the due date.
- Learners tuition will be suspended after three (3) notices and being one (1) month in arrears.
- Learners tuition will be suspended and the learner will be issued with a Transfer Card after being three (3) months in arrears.

### C. FUNDRAISING

#### **Fundraising is an integral part of the school program.**

- It is compulsory for all parents to contribute generously and to support all fundraising efforts at the school.
- With each fundraiser parents will be compelled to buy/spent Rx amount, regardless whether they (parent or learner) attend the function or not.
- All civvies days must be supported @ R50 per day per month.
- The learner's school fee account will be debited with the fundraising amount due (if not paid). The statement will indicate this.

#### **Preliminary Program 2020 (\*\* subject to change)**

<b>Date</b>	<b>Event</b>	<b>Parent Contribution</b>
31 January	Civvies Day	R50 per learner
07 February	Sports Evening	± R100 per learner
28 February	Civvies Day	R50 per learner
20 March	Civvies Day	R50 per learner
06 March	Sports Evening	± R100 per learner
30 April	Civvies Day	R50 per learner
29 May	Civvies Day	R50 per person
31 July	Civvies Day	R50 per learner
28 August	Sports Evening	± R100 per learner
05 September	Open Day – Fundraiser	R300 voucher per learner
26 September	Matric Banquet	R450 per person
30 October	Civvies Day	R50 per learner
06 November	Sports Evening	± R100 per learner

**# The 2020 events calendar will be posted on the website.**

### D. INTERVENTION PROGRAMS

- Parents to pay cash for intervention programs – school fee account debited if amount due is not paid. Parents will be informed of the amount payable.
- It will be compulsory for learners to enroll for the English and Mathematics intervention programs. The projected cost will be ± R200 per subject.

### E. EDUCATIONAL EXCURSIONS

- 4 (four) educational trips are planned for the year. One per term.
- Parents to pay cash for educational excursions. Please meet the due dates to enable the organizers to finalize the trip.
- Parents can budget ± R250 which will include transport, food and entrance fees.

## **F. VANDALISM / BREAKAGE**

- Parents will be informed when children damage hostel and/or school property.
- Cost of repairs and/or replacement will be claimed from parents.
- If not paid soon, your child could be suspended until the account is settled.
- Parents should pay the amount in cash. If the money is not received, the school account will be debited with the amount due.

## **G. TUITION FEES PAYABLE**

- **R1 000 non-refundable Application/Registration Fee.**  
Paying this amount secures the child's space in the school. On condition:  
(1) All the forms are properly completed and signed  
(2) All the relevant documents submitted  
Applications can only be processed once all the documents have been received.  
The school reserves the right to call both parent and learner for an interview.
- **School Fees: Ranging from R34 650 in Grade R to R39 160 in grade 12**  
[Gr R – 3\*R34 650; Gr 4 – 6\*R35 750; Gr 7 – 9\*R36 300; Gr 10 – 11\*R36 960]
- School fees can be paid on an installment basis (X 11 months) namely:

**Examples:** Gr R – 3: R3 150 per month                      Gr 4 – 6: R3 250 per month  
                  Gr 7 – 9: R3 300 per month                      Gr 10 – 11: R3 360 per month  
                  Gr 12 : R3 560 per month

School Fee account must be paid-up (settled) for the year by the  
**3rd November 2020.**

**PLEASE NOTE: The first payment is due by 03 January 2020.** If you only start to pay from the end of January your account will always be one month in arrears.

### **STATIONERY**

Stationery lists are obtainable from the Register Class Teacher/ Secretary.

Stationery is **not included** in the school fees.

**ONLY SCHOOL FEES SHOULD BE PAID INTO THE SCHOOL'S BANK ACCOUNT.** All other monies should be paid cash at the school's bursar.

### **TEXTBOOKS : e-BOOKS**

The textbooks (e-Books) must be purchased (license fees paid) via the Internet. The e-Books will be downloaded onto the Tablets. Credit Card, EFT or cash payment into the service providers bank account. The e-Books will be downloaded onto the Tablets.

The textbooks (e-Books) are **not included** in the school fees.

### **TABLETS**

The parents must purchase the Tablets from the relevant supplier(s). The school will negotiate a special price for the parents. The learning material will be downloaded onto the Tablets at the school. The Tablet is **not included** in the school fees.

### **DISCOUNTS**

Annual school fees paid in full by 31 January – Less 5%

1<sup>st</sup> Child - No Discount

2<sup>nd</sup> Child - 10%

3<sup>rd</sup> Child - 20%

4<sup>th</sup> Child - 20%                      [The younger sibling(s) being discounted.]

Staff Discount – 20%              (Only one discount per child)

**BANKING DETAILS**

**Name of Bank** : **ABSA**  
**Branch Code** : **632005 Vereeniging**  
**Name of Account** : **El Tabernacle Educational Services**  
**Account Number** : **4060940872**  
**Account Type** : **Cheque Account**

- Please arrange with your bank for monthly debit order payments
- Cheque payments and direct deposits into the account will only be allowed in exceptional circumstances
- **Please make out all cheques to "El Tabernacle Educational Services"**
- It is essential that our accounts department be given copies of transactions made (eg. Deposit slips) to enable us to credit your account in good time.
- Please ensure that the transaction is **properly referenced, write the child's name and surname**. Ask the teller to type in your child's name. Some branches do have a tendency to leave out the reference.
- It remains the responsibility of the parent/guardian to ensure that we receive proof of payment. Please check your statement regularly for any discrepancy. Call our accounts department to rectify the error.

**IMPORTANT NOTICE**

**Parents please open a Savings account for your child to be used for pocket money, excursions money etc.**

**Please do not pay money into any teacher or staff member's bank account.**

**\*\* The school account should only be used for school and hostel fees.**

**SCHOOL FEE STRUCTURE – 2020**

Registration Fee (non-refundable)		R1 000 (payable on the day of registration)	Payable in cash at the school	Learner only duly registered after payment of registration fee
Grade	School Fees payable for the year	11 Monthly payments (payable by the 3 <sup>rd</sup> of each month)	Payable monthly by debit order into the school account	School fees are payable in advance by the 3 <sup>rd</sup> of each month
RR	R28 875	R2 625	Please ensure that the transaction is properly referenced. Write the name of the learner in the space provided for the reference number on the deposit slip.	<p><b>It is compulsory to arrange for monthly debit order payments.</b> Cheque payments and direct deposits into the account will only be allowed in exceptional circumstances. Please ensure that the cheque will be paid by your bank. If the cheque is returned (R/D), Administration fee of <b>R30</b> will be charged and the outstanding amount must be settled in cash only.</p>
R	R34 650	R3 150		
1	R34 650	R3 150		
2	R34 650	R3 150		
3	R34 650	R3 150		
4	R35 750	R3 250		
5	R35 750	R3 250		
6	R35 750	R3 250		
7	R36 300	R3 300		
8	R36 300	R3 300		
9	R36 300	R3 300		
10	R35 200	R3 360		
11	R35 200	R3 360	<p><b>Stationery, e-Books and Tablets are NOT included in the school fees.</b></p>	
12	R39 160	R3 560		
Registration <i>before</i> 31 December		First monthly instalment due by 03 January 2020	<p><b>It is compulsory for parents to contribute generously and to support all fundraisers at the school.</b></p>	
Registration <i>after</i> 31 December		First monthly instalment due with immediate effect for January 2020		

**Please note: A learner who starts school during the term e.g. February will be liable for the full term's tuition fees.**

## **CODE OF CONDUCT - LEARNERS**

EL Tabernacle Christian College is a private school, which promotes a high standard of education, and is constantly in the public eye. Learners should therefore be proud of their school and adhere to the code of conduct at all times.

All learners who are accepted at EL Tabernacle Christian College and their parents will be required to read the school's Code of Conduct and sign acceptance of the conditions of the Code of Conduct.

The focus of discipline at EL Tabernacle Christian College is positive and encouraging. However, this needs to be balanced with the reality that all children need structure and routine. Boundaries need to be set. When these boundaries are crossed, there must be a reaction. In this environment the child learned responsibility and respect for authority.

### **GENERAL RULES OF THE SCHOOL**

1. Learners must move to their respective lines and line up as soon as the bell is rung in the morning for assembly.
  2. When the whistle is blown, learners must be silent.
  3. Learners must move in an orderly fashion from assembly lines to their classes.
  4. When the bell rings at the end of a period, learners will move quickly to the next lesson.
  5. All teachers should be greeted; Mr Johnson or "Sir" for male teachers; for lady teachers; Mrs Macdonald or "Madam". The term brother or sister is also acceptable e.g. Bro Glen.
  6. Learners must stand up and greet when approached by a parent, teacher or adult.
  7. No bad language or rude signs will be tolerated.
  8. Learners may not smoke or drink alcohol. They may not chew bubblegum while in class.
  9. Learners must be punctual for school and school functions.
  10. Learners should attend all compulsory school functions.
  11. Learners must be dressed in full school uniform at all school functions unless otherwise notified by the Principal.
  12. Learners may not leave school during school hours without permission from the Principal or Deputy. Parents must notify the Principal or Deputy in writing if a child is to be absent, or missed part of the school day.
  13. Prefects must be obeyed. Insolent learners who failed to comply with the rules will be punished.
  14. Water should not be thrown around.
  15. Class Captains will be appointed quarterly to assist the teachers and help keep control.
  16. No learners may return to the Hostel during school hours.
  17. All appointments for dentists, doctors or motor car licenses, should be made after school if possible.
  18. **No cell phones**, MP3 Players, earphones and other portable hand held devices. Cell phones and these other devices will be confiscated.
- † No Luciferian, satanic, devil worship, occult and related activities. No spiritualism and witchcraft. No relics, symbols etc. to be worn or displayed in any manner e.g. pentagram.
- † No ancestral spirits/worship, no sangoma or inyanga related activities will be allowed. No traditional relics e.g. cow skin bangles, beads, protection strings to be worn or any traditional rituals to be performed on the premises.



## COMBINING SPIRITUAL AND ACADEMIC ..... BUILDING A FUTURE FOR OUR CHILDREN!

### **RULES REGARDING APPEARANCE AND ATTIRE**

1. No jewellery may be worn. Specifically no coloured or fancy hair clips or rings are allowed. Take note of the following exceptions: wrist watchers and medical alert bracelets are allowed.
2. No cosmetics (make-up) are allowed. No eye pencil, foundation, lipstick, blusher, eyeshadow etc.
3. No nail polish or even clear nail vanish (natural cutex) may be worn. Nails must not extend beyond the finger tips. Keep nails clean.
4. Boys' hair must be short and neat. No way out and outlandish haircuts are allowed for boys. Girls must tie up their hair when it reaches the nape line of their dresses or when it is long enough to be tied. Hair to be kept well away from the face.
5. Boys must shave as soon as stubble is visible. Boys and girls should always look neat and tidy.
6. When learners are in any type of school uniform, it is mandatory to wear Full uniform.
7. Boys are allowed to wear black or grey school socks; Girls must wear white school socks (no tennis socks)
8. **Shoes:** Boys and girls must wear Black **school** shoes
9. No jerseys or blazer may be worn around the hips and sleeves may not be rolled up or pushed up.
10. Ties are to be worn with school shirts. Long sleeve shirts may not be rolled up.
11. Learners may not mix their school uniform with their sports uniform.

### **RULES IN THE CLASSROOM**

1. Order must be maintained at all times in the classroom.
2. Learners must not be rowdy when they are not supervised – prefects and class captains are allowed to step in and bring the class in order.
3. All waste must be placed in dustbins.
4. No objects must be thrown around. No rubbish should be thrown in desk or on the floors.
5. Writing on desks is prohibited.
6. School and Private property must be respected and not damaged.
7. If a teacher is more than 2 minutes late for a class, it is the duty of the class captain to find the teacher or notify the HOD/Deputy.

### **RULES OF THE YARD**

1. All waste must be placed in the dustbins provided.
2. No ball games may be played on (to be designated) during breaks.
3. Learners should keep to their respective playgrounds.
4. The (to be designated) areas are out of bounds during break.
5. No "horseplay" on the yard.
6. Boys and girls to behave as ladies and gentleman with good manners and due consideration for others. Mutual respect is accepted from all.

### **RULES OF THE TUCKSHOP**

1. Order must be maintained.
2. Wait your turn.
3. If the juniors and seniors have a break simultaneously, the break will be split in half and seniors will be served first.
4. Learners are to be courteous to the adults serving in the tuck shop at all times.

### **RULES OF THE SCHOOL BUSSES**

1. Movement from and onto busses should be orderly and speedy.
2. Learners should be seated at all times. No standing on the steps or in the aisles.
3. Learners are to behave on the busses. No pushing or fighting will be tolerated.
4. School rules are applicable on school busses.

**COMBINING SPIRITUAL AND ACADEMIC ..... BUILDING A FUTURE FOR OUR CHILDREN!**

**MOTORBIKES AND CARS**

1. To be able to drive a car or motorbike to school the learners must be in possession of the appropriate valid driver's license. A letter from the parents, as well as a copy of the original driver's license must be submitted to the Principal. No passengers are allowed.
2. Permission will be withdrawn in the event of reckless driving.

**RELATIONSHIPS**

1. No sexual relationships will be allowed.
2. No homosexual (gay and/or lesbian) relationships and activities will be tolerated. Shun the very appearance of evil.
3. No kissing, hugging, holding of hands, smooching, "jolling" will be tolerated.
4. Flirtatious behaviour is prohibited. Boys should not entice or throw their male spirit on the girls. The girls should not entice or throw their female spirit on the boys. Flirting strictly prohibited.
5. No physical contact between boys and girls.  
The school subscribe to Holiness and El Tabernacle church doctrine that governs the relationship between young boys and girls. This is regarded as a very serious offence and cause for immediate expulsion.
6. No married learners (inclusive of traditional marriages) will be allowed to attend school.
7. No pregnant learners or parents are allowed as a learner. Such learners must attend an ABET centre.
8. Any relationship between a boy and a girl need the consent of both learners' parents. Parents will be informed of such a relationship. They need to give consent. This relationship will only be allowed if it is conducted according the church and school rules that governs such relationship called "Booking". "Booking" is the only form of relationship that is allowed.

The school upholds strict Christian principles and values in this regard – to be a school where a Christian child can still be a child and school in an environment with other children that is likeminded. Children need to subscribe to Christian family values that include abstinence and bringing up a child in the ways of the Lord.

**SERIOUS OFFENCES THAT WARRANTS SUSPENSION/EXPULSION**

**The Principal has the right to suspend with immediate effect from the school, any learner who contravenes the rules of the school, whose behaviour is objectionable, behaves immorally in any way or who influence other learners wrongfully.**

**The Principal has the right to expel from the school, any learner who contravenes the rules of the school, whose behaviour is objectionable, behaves immorally in any way or who influence other learners wrongfully.**

**Serious offences:**

1. **Bullying. Intimidation and harassment. Fighting. Assault. Violence or violent behaviour. Cruelty, Brutality. Viciousness. Meanness, Rough treatment.**
2. **Theft or party to such practice.**
3. **Carrying (in possession) of guns, knives or other dangerous weapons.**
4. **Cigarette, Vape, Orca pipe smoking, possession or selling of cigarettes or party to such practice.**
5. **Possession, Selling, Distribution and Consumption of alcohol/liquor on the premises or drunkenness or party to such practice.**
6. **Possession of drugs, drug usage or drug peddling or party to such practice.**
7. **Pupils found in possession of pornography, distribution of pornography or any other pornography related activities or party to such practice. Inclusive of vulgarity of any kind. Vulgar music videos and pictures.**

**The school and hostel premises is a weapon free, cigarette free, alcohol free, drug free and pornography free zone.**

8. **Learners must not under any circumstance participate in alcohol or habit forming drug usage or party to such usage (substance abuse).**
9. **Gambling or party to such practice.**
10. **Forgery of any signature, letter or communication effort. Involvement in fraud, or pyramid schemes/money lending schemes.**
11. **Learners must not take part in any criminal offence or carry any weapons of any sort.**
12. **Satanism, Luciferianism, occult and witchcraft or party to such practice.**
13. **Breaking or damaging school/hostel/church and or other person's property deliberately or party to such practice. Graffiti.**
14. **"Jumping" – Leaving the school/hostel premises without permission from parents and/or the principal.**
15. **Swearing, foul and vulgar language, filthy conversations. Incitement. Hate speech.**
16. **Influence other learners wrongfully, rude, insolent, rebellious, defiant, stubborn, obstinate and undermining authority.**
17. **Ganging-up, forming clans for wrong reasons and purposes. Gangsterism strictly prohibited. Ganging up against a minor or a minority group, or conspiracy to cause and promote fighting.**
18. **Defrauding the school by manipulating the pay telephone and washing machines.**
19. **Defamation of character by verbal or physical abuse, or by using any electronic messaging equipment such as a cell phone or e-mail, Facebook, Twitter, or any other website or Internet based medium. Cyber bullying. Bringing the school in disrepute, tarnishing the school's image in any way.**
20. **Continued disciplinary problems in the dining hall, study hall or rooms. Seriously and continuously disrupts study sessions or dining hall procedures.**
21. **Flirtatious behaviour is prohibited. Boys should not entice or throw their male spirit on the girls. The girls should not entice or throw their female spirit on the boys. Flirting strictly prohibited.**
22. **No sexual relationships will be allowed.**
23. **No homosexual (gay and/or lesbian) relationships and activities will be tolerated. Shun the very appearance of evil.**
24. **No kissing, hugging, holding of hands, smooching, "jolling" will be tolerated.**
25. **No physical contact between boys and girls.**
26. **Racism, xenophobia or any other related racial slurs.**
27. **Continued disciplinary problems in the Religious Instruction class. Disrespect and disregard for Religious Instruction. Refusing to do assignments, assessments and writing examinations.**
28. **Continued disciplinary problems in the sanctuary, devotions and assemblies. Disrespect and disregard for spiritual activities will not be tolerated. Learners are enrolled on the basis that they are Christians and uphold Christian values. They need to show interest in the worship and can't be idle spectators.**
29. **Any misbehavior, misconduct or misdemeanor that grossly undermines the Christian ethos of the school and go cross grain against our motto of Holiness.**
30. **Bringing the school in disrepute and disgrace by his/her actions, behaviour, statements and posts on social media.**

**Parents are responsible for the behaviour of their child at school.**

## POLICY FOR PARENT PROTOCOL

**1. Lines of communication:**

This procedure must be followed for any contact with a teacher. Parents should phone the secretary. The secretary will contact the teacher and co-ordinate a suitable time for the appointment. Parent or the teacher concerned may request that the HOD be present. If there is no satisfactory outcome, the parent or the teacher may request a meeting, with the Principal.

**2. Making an appointment:**

The secretary will co-ordinate a time suitable to all parties.

**3. Emergencies:**

Occasionally parents might need to contact teachers during the morning. The secretary will screen these and schedule a time or ask the teacher to contact the parent at break. (10:40)

**4. Nature of Query:**

The secretary will enquire about the nature of the query so that the teacher is able to prepare for the appointment.

**5. Classroom visits to a teacher:**

These are not permitted. Teachers are expected to start their classes at the appointed time and may not delay this because of an informal meeting. At 14:40 or 14:00 teachers have meetings or extra murals and may not delay these because of an informal meeting. Only if 14:40 is the time scheduled by both parties, will this be in order.

**6. Letters to teachers from parents:**

These should be addressed to the teacher and placed in a sealed envelope and dropped off at the Front office. **LETTER'S TO THE TEACHER SHOULD NOT BE WRITTEN IN THE CHILDS BOOK.** Parents should not give a letter to their child to forward to the teacher. Children often share this information with their friends and are therefore detrimental to relationships between teachers and parents. Responses from the teacher will be placed in a sealed envelope to be collected by the parent in the front office.

**7. Appointments for learners in school time:**

As far as possible parents should inform the teacher by means of a short note of the possible absenteeism of a child at least one day before the appointment. This will help the HOD to write the "Permission to leave the school" note in advance. Parents should wait at the front office where the admin staff will phone for the staff. Parents will therefore collect the child from the front office and not from the classroom.

**8. Any other complaints:**

This must be in written form and signed. If this is not done, it will not be act upon.

## School Uniform

### Dress Code

At EL Tabernacle Christian College we believe in following a middle-of-the-way policy as far as dress and fashion is concerned, and we generally advocate a conservative style of dress. Generally, the latest fads in clothing or hairstyle, especially when it is out of line with the mainstream of conservative EL Tabernacle dress principles, will be **unacceptable** at the School.

Certain styles of clothing and hairstyles are not in accordance with Christian modesty, and can, therefore, not find a place on a Christian campus.

- Learners must be dressed according to EL Tabernacle Dress Code at all times. This dress code is applicable to school, church and leisure casual wear.
- **Boys** : No worldly hairstyle and No earrings. No short pants. No sleeveless tops. No baggy clothing. No tight fit trousers. No hipsters.
- **Girls**: No trousers (**no short pants, half length or long pants**)  
Skirts and dresses, the length should be **way below the calf**.  
No tight fitting clothes (skirts, dresses, blouses) that shape the body  
e.g. T-shirts.  
No see-through clothing e.g. blouses.
- Girls should be dressed in modest apparel as a Godly Christian Lady.

### Jewellery

No jewellery should be worn. This includes rings, arm bangles, friendship bands, chains around the neck and ankles. Earrings are strictly forbidden (studs included). This rule applies when attending all school functions and activities.

### Hair

Hairstyles for school, recreation and other occasions must suit the occasion, and witness to the standards of a Christian school.

Extremes in hairstyles and hair colouring will not be allowed.

**Girls**: No outlandish hairstyles will be allowed.

Hair may not be highlighted or coloured unnaturally e.g. purple, red etc.

Braids, wigs, weaves or hairpieces of any kind to conform to the standards governing hair and hairstyles as prescribed by the rules of the church e.g. no wetlook, frizzy, bob etc.

No fringes; strands of hair should be clear of the face.

The girls with short hair should have it held in place by a hair band.

No loose hair, it should be tied back in a ponytail or a bun ("bolla"). Hair accessories should only be in red and white.

**Boys**: No outlandish hairstyles will be allowed. Hair must be evenly cut. School boy cut.

Hair may not be highlighted or coloured. No mohawk and funny hair styles.

Side-burns should not be lower than the middle of the ear (no side-burns).

Beards and moustaches are not allowed. Boys should shave regularly.

**The school reserves the right to disqualify any hairstyle deemed not appropriate for school.**

**School Colours:** Red, White, Navy and Gold

## **Dress Regulations**

The **wearing of the school uniform is compulsory**. Parents must ensure that the learner is furnished with the school uniform. It is mandatory for learners to wear school uniform daily except on civvies days. It can be purchased from our **official stockist**:

### **Sedgars**

Contact: (016) 422 3804

9 Market Ave

Vereeniging

### **Our official stockist of uniform.**

**SEDGARS is situated in the CBD of Vereeniging. The R82 (old JHB Road) becomes Voortrekker Street, the main road. Turn right into Market Street.**

**Parent should take note that the trousers, shirt, dress, skirt and blouse are especially designed with embroidery work on it (School Badge).**

#### **Boys**

Grey trousers, White shirt

Grey socks, Black shoes

**Plain white** or **plain red** golf shirt only (skipper with a shirt collar, no T-shirt)

#### **Girls**

Red Skirt – length should be **way below the calf**

White blouses

White socks only

Black shoes

#### **Tie**

Red tie with school badge (**boys only**)

#### **Jersey**

Red jersey with school badge

Red pullover with badge

#### **Drimac**

Red drimac with school badge (**Red only**)

Red jacket with school badge

**A learner will not be allowed to wear a badge other than the school badge.**

## **Tracksuit (sportswear)**

Red, Navy and White tracksuit with a badge in front and on the back.

Red/white scarf and beanie (“kappie”) only, during the winter.

The beanie is there to warm yourself and not to be used as a fashion item.

## **Footwear**

Please take note: **Only black school shoes.**

“Tekkies” only allowed with the tracksuit pants/skirt. (The wearing of “tekkies” is a privilege and not a right and can be revoked at any time.)

White shoe “tekkie” only; no boot or basketball sneakers.

No need to make a fashion statement by wearing the latest “tekkie” on the market.

This is a school and not a fashion show.

The school reserves the right to disqualify any footwear (deemed not appropriate for school).

**\*\* Please clearly mark all the learner’s school uniform. The lost and found is always full of unmarked uniform.**

## **PERSONAL HYGIENE**

- Personal hygiene is of utmost importance.
- Wash, (especially armpits etc.) daily.
- Wash mouth and brush teeth daily.
- Use roll-on and deodorant.  
Learners complain about bad odours. It is thus up to each individual learner to take care of personal hygiene to avoid bad odours. Embarrassment both to the learner and management if we handle it. Can be avoided.
- Comb and neaten hair daily. Hair accessories of girls must be in red and white. Braiding need to be properly taken care of. Braiding and extensions styles should be appropriate for school.
- Change socks and underwear daily.
- Wash socks and underwear daily. Hang outside to dry properly.
- Polish and shine shoes daily.
- Learners should be tidy at all times. Shirts must be tucked in at all times.
- Hostel and rooms should be kept neat and tidy at all times.
- Bedding must be changed regularly.
- A proven cheap and effective way to get rid of smelling feet, socks and shoes is to use ‘bicarbonate of soda’ as foot powder.

## El Tabernacle Christian College

### **2020 – College Calendar**

#### **1<sup>st</sup> Term**

Open: 13 January (Teachers)  
14 January (Hostel learners @ 16:00)  
15 January (Learners)  
*Close: 20 March*

#### **2<sup>nd</sup> Term**

Open: 31 March  
*Close: 12 June*

#### **3<sup>rd</sup> Term**

Open: 07 July  
*Close: 18 September*

#### **4<sup>th</sup> Term**

Open: 29 September  
*Close: 02 December*  
*04 December (Teachers)*

#### Other school holidays (Public holidays):

21 March  
10 April  
13 April  
27 April  
01 May  
16 June  
09 August  
10 August  
24 September

**\*\* Hostel learners report at the hostel the day before the school re-opens from 16:00-19:00.**



## **Important Academic Aspects**

### **LOLT**

The **L**anguage **O**f **L**earning and **T**eaching is ENGLISH. This is an English medium school. English is the Primary Language and thus regarded as the learner's Home Language.

### **First Additional Language**

At this stage we only offer First Additional Language, which is AFRIKAANS. All learners are compelled to do Afrikaans at First Additional Language level.

### **Lessons**

Learners attend lessons 3 – 9 times per cycle, depending on the subject and grade. A lesson lasts 30 – 45 minutes.

### **Attendance**

Regular attendance is important. Should your child be unable to attend his/her lessons as scheduled, please advise the school. Medical certificates need to be submitted especially during absence from summative assessments (tests, exams etc.)

### **Diary**

Please provide the learners with a diary. The diaries must be used to write down homework, projects, assignments, due date etc. Parents must check the diaries on a regular basis. The diary can also be used to communicate with the teacher /parent regarding homework not being done or aspects the learner struggles with especially with the intervention program.

### **Homework**

Homework will be issued at the end of each lesson, even if it is just to read. Your child should do homework each day. If your child is on the intervention programme, please check that he/she does the homework of the intervention programme as well. Your child needs to read at least 2 English books and 1 Afrikaans book per month - 6 English books and 3 Afrikaans books per term.

### **Psychometric / Educational Tests**

All learners will be subjected to psychometric, numeracy and literacy tests at the beginning of the year. The outcome of these tests will be discussed with the parents. Other existing reports of this nature must be shared with the school in order to help the child.

### **Intervention**

Poor performance during the course of the year will be discussed with parents. If learning problems are suspected, the parent must refer the child for outside professional diagnosis and help.

Parents need to attend all the meetings called by the class teacher, subject teacher or principal to discuss the learner's academic progress. The parent is a partner in the education process. Parents need to be in contact with the school at least once a month to check and discuss the child's progress.

The outcome of all educational tests will be discussed with the parents and they need to act on the recommendations e.g. to enroll the child at a learning centre or referral to an educational psychologist.

### **Placement Tests**

All learners that enroll for the first time will be subjected to a placement test.

**EL TABERNACLE CHRISTIAN COLLEGE**

**ASSESSMENT POLICY EXTRACT**

**\*\*\* PROMOTION REQUIREMENTS 2020 \*\*\***

**Grade 1 – 3 (Foundation Phase)**

In order to be promoted to the next grade a learner must achieve:

At least Level 4 (50% - 59%) for Home Language - English

At least Level 4 (50% - 59%) for First Additional Language - Afrikaans

At least Level 4 (50% - 59%) in Mathematics

At least Level 4 (50% - 59%) in Life Skills

**Grade 4 – 6 (Intermediate Phase)**

In order to be promoted to the next grade a learner must achieve:

At least Level 4 (50% - 59%) for Home Language - English

At least Level 4 (50% - 59%) for First Additional Language - Afrikaans

At least Level 4 (50% - 59%) in Mathematics

At least Level 4 (50% - 59%) in two other subjects

Any level in the remaining one subject (learner can fail only one subject)

Religious Education is assessed but not used for promotion purposes.

**Grade 7 – 9 (Senior Phase)**

In order to be promoted to the next grade a learner must achieve:

At least Level 4 (50% - 59%) for Home Language - English

At least Level 4 (50% - 59%) for First Additional Language - Afrikaans

At least Level 4 (50% - 59%) in Mathematics

At least Level 4 (50% - 59%) in five other subjects

Any level in the remaining one subject (learner can fail only one subject)

Religious Education is assessed but not used for promotion purposes.

**Grade 10 – 12 (FET Phase)**

In order to be promoted to the next grade a learner must achieve:

At least Level 4 (50% - 59%) for Home Language - English

At least Level 4 (50% - 59%) in five other subjects

Any level in the remaining one subject (learner can fail only one subject)

Religious Education is assessed but not used for promotion purposes.

*Take note: At least Level 4 (50% - 59%) for Life Orientation for university entrance purposes.*

## *EL Tabernacle Christian College Goes Digital!*

**EL Tabernacle e-School** - The imposing western façade majestically etched against the southern Gauteng sky welcomes you as you enter the campus of EL Tabernacle Christian College. Established in 2005, starting from Grade R to Grade 12. In the same year the school attained a 100% Grade 12 pass rate. The school made history.

Now years later, the school is preparing itself to take yet another giant leap as it launches itself into the sphere of technology in education by introducing a fully digital e-School model. The school envisage to go digital from Grade R to Grade 12 – to delay is no longer tenable. E-School, e-class, e-Learning, paperless classroom, digital education is some of the names given to this endeavour.

This e-learning initiative will undoubtedly leave a lasting academic legacy, positioning the school as one of the best, if not the best in the region. This will surely compliment the already incomparable spiritual wing. Combining Spiritual and Academic (*e-Learning*) ... building a future for our children.

### **What does this process of digitization entails?**

While most of us grew up in a generation where textbooks, notepads, 72 pages, 2 quire hard covers, brown paper and plastic to cover books, HB pencils and Bic pens were classroom necessities, the digital age is quickly changing the landscape of schools across the world. What learners used to get in a school bag full of books is now available in the palm of their hand, in the form of a Tablet.

The traditional textbooks that felt like pieces of lead in the learners' schoolbags will be replaced by e-Books (PDF's, e-pub, interactive digital textbooks). These e-Books, CAPS aligned school e-textbooks will be loaded onto Tablets. The Tablet will be used as an e-reader, for doing class work, homework, assessment tasks including formative and revision tests.

[Unfortunately, or is it fortunately, learners will still write formal summative tests and examinations 'manually' i.e. pen on paper.]

The school already installed a Wi-Fi infrastructure and is in the process to install a server that carries all the learning content. Teachers will upload the learning content to the server and the learners will download the relevant content (learning material) during class time onto the Tablet. The educator will teach from the Tablet and can project the same screen on the white board and the learners Tablets. Teachers will build their tech-savviness into the lesson plans. It will indeed be a digital learning environment.

The roll out will take place in a pedagogical and didactically sound and responsible manner. Teaching will still take place, just better. Instead of talk and chalk, it will be "talk and tablet". At EL Tabernacle Christian College, a **teacher remains crucial** in our teaching model. We believe in a mouth (teacher) and an ear (learner) for effective teaching and learning. The teacher still need to teach the content. The teaching and resource material will be digitally available. The Tablet remains a teaching and learning tool that resonates well with the millennium kids, bridging the gaping digital divide.

### **Foundation Phase**

Teaching will continue as usual. Learners will be taught how to read, write and do mathematical calculations. The Tablet will be introduced and used daily as a teaching tool. The keyboard and touch screen will be of great assistance to the teacher. Children learn from a young age.

## e-LEARNING

- Wi-Fi infrastructure – Converting the entire school, hostel and playground area into a Wi-Fi Hotspot.
- Tablet replacing the schoolbag.
- Grade specific multimedia content that incorporates video lessons, interactive applications, class notes, hand-outs, readings and teacher resources.
- Learners record and type their notes digitally.
- Commercial and open source material that is CAPS and Topic aligned.
- DBE Resources.
- Digital textbooks known as e-Books purchased from online bookstore; using a textbook aggregator or “virtual book store” – customised online store with the school’s logo.
- Homework and assignments can be completed, submitted and marked (digitally) right on the tablet.
- Classroom management solutions – learners easily connect their Tablets to the classroom Wi-Fi network while the teacher stays in control.
- Access to YouTube School, Google Apps etc. via the school’s internet connection.

### e-Books

- 98% of all the prescribed textbooks in use, are available as e-books.
- Parents buy the e-books from our online bookstore in collaboration with Snapplify.
- Booklists are available per grade.
- Online book store, click on <https://eltabernacle.snapplify.com>

### e-Notes

- Teachers will supply the learner with e-Notes.
- e-Notes available for all subjects in all the grades.
- Learner to make own e-notes during teaching. (*stylus pen needed*)
- Learner to do activities/worksheets on the tablet. (*stylus pen needed*)

### Tablet Specifications

*These are the minimum specifications:*

- 10' inch. - better for educational purposes.
- Minimum Processor speed 1.2 Dual Core ... Recommended : speed 1.5 GHZ Quad Core.
- Recommended Memory – 1GB (RAM) 16 - 32 GB Micro SD memory card.
- Battery life 10 hours at least 6.5 hours with constant usage.
- Recommended version of Android: 4.2.2
  - Android 4.2.2 – Flash player 11.1.115.63
- WI-FI connectivity (no need for 3G).
- Stylus pen. (capacitive)
- Plastic or glass screen cover for protection. **\*\*\*Highly Recommended**
- Tablet cover for protection. **\*\*\*Highly Recommended**

***Recommended and Prescribed: 9.7” or 10.1” Samsung Tab A***

Out of experience we recommend the above mentioned tablet.

It is compatible with all the relevant Apps e.g. the Snapplify App and prescribed e-books.

The tablet with the least(if any) problems.

***Parents are encouraged to finalise the purchase of the Tablets and e-books as soon as possible.***

***Please avoid the last minute rush at the re-opening of the school.***

**ABRIDGED TABLET POLICY**

**Code of Conduct Pertaining to Tablets**

*Combining Spiritual and Academic (e-Classroom) ... building a future for our children!*

The overall goal of the school in this area is to create and maintain a cyber-safety culture which is in keeping with values of the school, and legislative and professional obligations.

The purpose of this policy is to prevent unacceptable use (misuse) of mobile devices by the school community, and thereby protect the School's staff and learners from undesirable use, undesirable materials, filming, recording, intimidation or harassment.

- The school follows a BYOD (bring your own device) policy which comes with its challenges.
- The device brought in to school are the responsibility of the device owner. The school accepts no responsibility for the loss, theft or damage of the personally owned mobile devices.
- No 3G cards/3G connectivity or 3G enabled tablets are allowed at school. ONLY WI-FI enabled Tablets.

**The Learner is responsible for:**

- The content of their own device. If another person uses the device, learner whose device it is, is responsible for ensuring the device is used properly.
- Learners need to understand that the tablet is for an educational purpose and should be used accordingly.
- Taking all due care in looking after their device. Loss or damage to the device is the responsibility of the owner of the device.
- Ensuring the device is fully charged at the beginning of each day.
- Ensuring the device is named/labelled and identifiable.
- Leaving the device in a secure place at all times.
- The onus is on the learner not to leave their possessions unattended; not to be negligent and leave their tablet lying around unattended.
- The onus is on the learner to look after their bag/Tablet while waiting for transport.
- Do not ask a fellow learner to look after their tablet as there is no guarantee of responsibility.
- Learners who leave their bags unattended, do so at their own risks.
- Learners are to keep their tablets/bags with them until it can be safely locked away or put under the direct supervision of a staff member.
- Do not play with or openly display their device (after school) as they are making themselves a target for crime
- Not using the device or the school network inappropriately.
- Not using the device to bring EL Tabernacle Christian College into disrepute.
- No recordings, images or videos should be taken on Tablets without the prior consent of the person or people concerned.
- If the learner finds anything that upsets him/her, is mean or rude, or that is not acceptable at the school, he /she will:
  - Close the browser window or file and not show it to others;
  - Get a teacher straight away.
- The learner can only go online or use the Internet at school when a teacher gives permission and an adult is present and supervising.
- Learners are not allowed to tamper with the EL Tabernacle Christian College Secured Wi-Fi settings on their tablets. All that is required is to turn the Wi-Fi on and off, as the EL Tabernacle College Wi-Fi connection will connect automatically when it is turned on.
- Learners are not allowed to share tablets for security and safety reasons.

## COMBINING SPIRITUAL AND ACADEMIC ..... BUILDING A FUTURE FOR OUR CHILDREN!

### **The School has the right to:**

- The school reserves the right to search the content of any mobile device on the school premises where reasonable suspicion exist that it may contain undesirable material, including those which promote pornography, violence, vulgarity, cyber bullying or anything that is contrary to the belief system of the school; injurious to the good of learners or incompatible with the school environment.
- Inspect a student's device pertaining to their current school work or if it is suspected that inappropriate software or other material has been downloaded on the device.
- Randomly and periodically monitor the activity of individual users of the school network.
- Load software on to each device to enable the device to access the school network and monitor the activity on the device during school hours.
- The teacher has the right to restrict the use of the device in their class when an alternative learning strategy is being used.
- The school cannot be held liable for damage should a learner mishandle and use the tablet for purposes for which it was not intended.
- EL Tabernacle Christian College staff, The Board of Directors and Owners of the school are not liable for theft and/or any damage caused to the tablets. The school will put systems in place to assist in the security, safe keeping and control of the tablets e.g. It is compulsory for the Foundation Phase learners to leave their tablets in the locked classroom during breaks.
- Educators need to adhere to the protocols which have been put in place to ensure the safety of the tablets.
- Educators need to ensure that the tablets are utilized to their full academic potential when conducting lessons.
- Educators need to ensure that the learners are using the tablets for academic purposes.

### **The Parent is responsible for:**

- Discussing the contents and implications of the Tablet policy with their child.
- Remain aware of what their child is doing with their device. Regularly inspect their child's tablet to ensure that no illegal/inappropriate content has been downloaded.
- Ensuring the child understands the value of the device and respects it.
- Parents need to instil reasonable disciplinary measures at home with regards to assisting in the care and security of the tablets.
- Notifying the school of any suspected misuse of the device in school time or on the school network.
- Recording and storing the serial number of the device and insuring it for theft and breakage.
- If a tablet is stolen, a letter needs to be written by the parent/legal guardian stating that the tablet is in for repairs or that it will be replaced.
- Parents need to ensure that the tablets are fully charged before the child attends school on each school day.
- Parents need to instil reasonable disciplinary measures at home with regards to assisting in the care and security of the tablets.

A more comprehensive policy will be issued in due course.

# SUBJECT CHOICE

FET Phase - Grade 10 to 12

## Compulsory Subjects

1. English [Home Language]
2. Afrikaans [1st Additional Language]
3. Life Orientation

## Choice Subjects

4. Mathematics / Mathematical Literacy
5. Physical Science / Tourism
6. Life Sciences / Business Studies
7. Geography / Accounting / Computer Applications Technology (CAT)\*\*

\*\* Limited space available: first-come-first-serve basis – if CAT is offered.

**Learner to choose only one subject in each group:**

<div style="border: 1px solid black; padding: 5px; margin-bottom: 10px; text-align: center;"><b>GROUP A</b></div> <p><b>Mathematics</b> <input type="checkbox"/></p> <p style="text-align: center;"><b>OR</b></p> <p><b>Mathematical Literacy</b> <input type="checkbox"/></p>	<div style="border: 1px solid black; padding: 5px; margin-bottom: 10px; text-align: center;"><b>GROUP B</b></div> <p><b>Physical Science</b> <input type="checkbox"/></p> <p style="text-align: center;"><b>OR</b></p> <p><b>Tourism</b> <input type="checkbox"/></p>
<div style="border: 1px solid black; padding: 5px; margin-bottom: 10px; text-align: center;"><b>GROUP C</b></div> <p><b>Life Sciences</b> <input type="checkbox"/></p> <p style="text-align: center;"><b>OR</b></p> <p><b>Business Studies</b> <input type="checkbox"/></p>	<div style="border: 1px solid black; padding: 5px; margin-bottom: 10px; text-align: center;"><b>GROUP D</b></div> <p><b>Geography</b> <input type="checkbox"/></p> <p style="text-align: center;"><b>OR</b></p> <p><b>Accounting</b> <input type="checkbox"/></p> <p style="text-align: center;"><b>OR</b></p> <p><b>Computer App. Tech. * <input type="checkbox"/></b></p>

\* Only 25 learners can be accommodated in the Grade 10 CAT class.

*A learner will be **compelled to change** during, or at the end of the 1<sup>st</sup> Term of the new academic year, if the learner underperforms in any of the following subjects: Mathematics, Physical Science and Accounting.*

**MATHEMATICS is a Required subject (PRE-REQUISITE) for Physical Science.**

## HOSTEL INFORMATION

### Conditions for Accommodation in the Hostel

**The following conditions are applicable for admission to the hostel and continued stay on the hostel; it will be strictly adhered to:**

- † The Christian ethos will be respected. Learner will attend prayer meetings/services on a Wednesday evening, Sundays and Saturday Combine Services or any other church service or religious activity arranged.
- † The assumption is that both parent and learner are confessing practicing Christians.
- † The school and hostel is not a rehabilitation centre. It is an institution of learning in a Christian environment; where The Holy Spirit and the Word of God have the preeminence.
- † Only learners, who behave Christ-like, will be accepted. They must show respect to God and have a desire for the things of the Lord.
- † In essence, the school/hostel is there to provide an environment where: (i) learners can express themselves spiritually (ii) feel free to walk with the Bible and to read it (iii) pray as often as they like (iv) easier to serve God (v) save their souls (vi) keep their souls saved until the Coming of the Lord.
- † No satanic, Luciferian, devil worship, occult activities and spiritualism.
- † No ancestral spirits/worship, no sangoma or inyanga related activities will be allowed. No traditional relics e.g. cow skin bangles, beads, protection strings to be worn or any traditional rituals to be performed or observed on the premises.
- † Only learners that are mature and independent will be accepted. Emotionally (psychologically) prepared and equipped to be away from home and be without their parents/family. He/she must be able to cope with the challenges of hostel life.
- † Only learners in Grade 4 to 12 will be accepted provided that they are mature enough and independent.
- † Only learners that will take care of their personal hygiene by themselves, that is wash themselves, brush their teeth and hair, dress themselves etc. No bad odours and untidiness can be tolerated.
- † Only learners that can take care of their personal belongings e.g. take out their clothes, put away their clothes, polish their shoes, and keep their rooms neat and tidy.
- † Learner need to do their homework on their own during the afternoon and evening study sessions.
- † Only learners that are used to rules and obeying them will be accepted. Supervisors and authority figures must be respected and instructions given obeyed.
- † Accommodation on the hostel is not an automatic right if the learner is enrolled at the school. If the learner is put of the hostel (expelled), the onus is on the parents to seek alternative accommodation.
- † Learner must do some chores in and around the building.
- † No boy-girl relationships allowed outside of the prescribed school and church rules.
- † Clothing must meet the standards and principles of the Dress Code of EL Tabernacle.

**The assumption is that the learner is a Christian and will strive to uphold Christian values at all times. Adherence, observance and obedience to the Word of God are a non-negotiable.**



## **Parents**

- † Parents to respect the school/church dress code when they come for meetings collect or drop off learners at the school.
- † Parents of learners should be Christians. Professing, confessing and practicing Christians. There is no sense for a parent who is a sangoma, nyanga, devil worshipper, Satanist etc. to enroll his or her child at this Christian school.
- † Parents to raise complaints with the Principal.
- † Parents should not enroll learners with pending court cases or learners that are involved in criminal activities at the school. The school is not a safe, hiding place for criminal elements.
- † Parents must inform the Principal upfront of any behavioural problem; smoking, drinking or drug problem; sexual perversion e.g. peeping tom, homosexuality. The school is not a rehabilitation centre.
- † Parents must inform the Principal about any family problem that might impact negatively on your child.
- † Parents must realize that the child enrolled might, and should accept the Lord Jesus Christ as his/her personal saviour. The school is not for street wise kids, but for children with a desire for God and the things of God.
- † Parents to read both the school and hostel prospectus to acquaint themselves with what the school expects from parent and learner alike.
- † Parents to properly authorize and sign the required forms that will allow learner to use public transport and or to use a lift club, or to go home with a friend.
- † Parents to stick to the prescribed times to pick-up and drop off learner.
- † Parents are responsible for the behaviour of their child on the hostel.
- † Parents to drop-off learners at 18:00 on Sundays and the day before school re-opens in the new term. Alternatively between 06:00- 07:00 on a Monday morning.
- † Parents to collect learner at 12:00 on the last day of the school term.
- † Parents need to pay the hostel fees **per term, in advance**.

## **Hostel Rules**

**It is not possible to administer a hostel for more than 120 learners without clearly defined rules of procedure and behavior being strictly enforced.**

**You will appreciate that these rules are not arbitrary, but, in every case, serve a necessary purpose, and your full cooperation is absolutely essential.**

**Any learner who is repeatedly guilty of serious disobedience, insolence or bad behavior of any kind will be asked to leave the hostel.**

## **Necessities**

### ***Items a child will need in the hostel***

1. Bible – Authorized King James Version
2. Bedding – pillow, pillow case, sheets, blankets, duvet
3. Towels
4. Facecloth
5. Toothbrush
6. Comb, Brush
7. Toiletries e.g. soap, toothpaste, roll-on, deodorant, body lotion, toilet paper
8. Personal articles (girls)
9. Shoe polish, shoe brush
10. Laundry bag (for dirty washing), pegs
11. Automatic washing powder (for coin operated Laundromat)
12. Trunk (Blue sheet metal suitcase with locks) size 32 ... please not bigger.
13. Clothes:  
School Uniform – Compulsory  
Church Clothing – The wearing of a tie to church is compulsory (boys).  
Learners need to be dressed formally for church services.  
Leisurewear and Sports gear - All clothing must comply with the prescribed dress code of EL Tabernacle.  
**All clothing must be clearly marked.**
14. Medical aid details – contact details of parents, next of kin  
Medical aid card – a copy of both sides of your membership card  
Details of allergies, chronic illness e.g. asthma  
Prescribed medication for e.g. asthma
15. Pocket Money. A Tuck Shop and Coffee Shop is available on the school premises. Cellphone calls minimum @ R5,00 (current rate) per call.
16. All the prescribed e-Books on the Tablet and Stationery. Homework diary.
17. School bag
18. The recommended 9.7” or 10.1” Samsung TAB A Tablet

## HOSTEL RULES

### General

- **The Code of Conduct of the School is applicable to the hostel.**
- School rules apply at all times.
- If a learner is suspended/expelled from the school, he/she is automatically suspended/expelled from the hostel.
- Learners to adhere strictly to the school and hostel rules.
- Learners to obey the instruction of the teachers and supervisors.
- Immediate reaction to all bells is expected.
- Boarders are expected to behave in a civilized manner at all times. Rudeness, unnecessary loudness and horseplay are not allowed.
- Only hostel residents are allowed in the hostel. No day scholars in the hostel.
- No girls may visit boys in the boy's hostel. Boy's hostel is out of bounds for girls.
- No boys may visit girls in the girl's hostel. Girl's hostel is out of bounds for boys.
- No smoking, alcohol and drugs allowed in the hostel and on the premises.
- No learner may use drugs and or consume alcohol off the premises and return in an intoxicated state. This rule also applies to learners returning from home in an intoxicated state.
- No pornographic material allowed. This can lead to immediate expulsion from the hostel (and school). No condoms allowed on the premises.
- No weapons allowed.
- No fighting and bullying allowed.
- Swearing, foul language, coarse and vulgar language is not allowed. Learners should not be foul-mouthed.
- Learners to observe the prescribed dress code. No provocative clothing may be worn.
- Boarders may not leave the school grounds without permission from the Principal.
- Boarders may not enter the hostel building during school hours without the permission of the Principal.
- Running or playing in the building is not permitted.
- No swimming allowed without proper adult supervision and permission from the principal.
- Please do not allow your child to bring expensive shoes, clothes or any other expensive articles to the hostel/school. We cannot be responsible should it get lost.
- Initiation: State regulations prohibit initiation in any form. Fighting, bullying and intimidation are strictly forbidden.
- Theft is regarded as a very serious offence. Learners guilty of theft will be reported to the SAPS.
- **NO CELLPHONES ALLOWED ON THE HOSTEL. CELLPHONES WILL BE CONFISCATED AND KEPT UNTIL THE END OF THE YEAR.**
- Learners to do chores in and around the building e.g. washing dishes.
- Hostel staff cannot be held responsible for injuries incurred by boarders when engaged in unauthorized, unjustified or illegal activities.
- **Parents are responsible for the behaviour of their child on the hostel.**

### Dining Room

- Learners to form a queue outside the building.
- Queue for boys and queue for girls.
- Bell ring – learners enter the dining room and remain standing.
- Table prayer

### **COMBINING SPIRITUAL AND ACADEMIC ..... BUILDING A FUTURE FOR OUR CHILDREN!**

- Learners sit and dish or form a line to be served (primary school learners to be first in the line)
- Thanksgiving prayer.
- Learners leave the dining room
- Learners to be orderly and quiet in the dining hall. Conversation at meals must be appropriate in both content and volume. Learners to behave themselves in the dining hall.
- The kitchen area is out of bounds, except for those learners on duty.
- Under no circumstances may crockery, cutlery, glasses, cups etc. leave the dining hall and kitchen.
- No water drinking in the kitchen.
- No food warming in the kitchen i.e. stove or microwave oven.
- No making of coffee, tea, Milo, hot chocolate or any other hot beverages in the kitchen or dining hall.
- No hot or boiling water available in the kitchen to make own beverages.
- No food stuffs of learners to be stored in the refrigerator or cold room.
- Tables need to be cleaned and chairs returned neatly behind the table.
- Learners to be served through the serving hedge at all times.
- Learners to do kitchen duty according to a roster. This includes washing dishes and cleaning the kitchen and dining hall.
- Learners must attend all meals even if they are not hungry.

#### **Bedrooms**

- Learners must make up their own beds and clean the rooms.
- Learners to keep the rooms and dormitories neat and tidy at all times.
- Clothes must be put away.
- No making of coffee, tea, Milo, hot chocolate or any other hot beverages in the rooms.
- No preparation of food in the rooms. No food allowed in the rooms.
- No electric kettles and irons allowed.
- Learners may only sleep in the rooms and in the beds assigned to them. This applies at all times (including weekends).
- Learners are responsible for the furniture and equipment in their rooms.
- Talking after lights out is not allowed.
- Learners are not allowed to walk around after lights out.

#### **Bathrooms**

- No toiletries, towels or clothing may be left in bathrooms.
- Keep the bathrooms neat and clean.
- **Save water.** Shower as quickly as possible. Keep taps closed.
- Report blocked drains and toilets immediately. Report leaking taps and pipes immediately.

#### **Laundry**

The provision of accommodation was based on the understanding that learners will go home on weekends, parents collecting learners after school on a Friday and return them on a Sunday afternoon. This arrangement allows parents to do the washing over weekends.

- **Learners clothes must be clearly marked**, this includes socks and underneath clothing.
- Dirty clothes must be put in a laundry bag.
- Learners are supposed to go home over weekends. Parents must do the washing over weekends.
- The washing and ironing of learner clothes are the responsibility of the parents.

## COMBINING SPIRITUAL AND ACADEMIC ..... BUILDING A FUTURE FOR OUR CHILDREN!

- **Learners can use the Laundromat.** Coin operated washing machines and tumble dryers are installed for learners to use. Parents should supply the learner with the minimal fee to use the Laundromat, especially learners that do not go home on a weekly basis. Learners to do washing in the laundry only. No washing of clothes to be done in the bathrooms.

### Dress Code

- Learners must be dressed according to EL Tabernacle Dress Code at all times. This dress code is applicable to school, church, leisure and casual wear.
- **Boys :** No worldly hairstyle and No earrings. No short pants. No sleeveless tops. No baggy clothing. No tight fit trousers. No hipsters or low hanging jeans or trousers.
- **Girls:** No trousers (no short pants or long trousers) – no pants.  
Skirts and dresses, the length should be way below the calf.  
No tight fitting clothes that shape the girl's body e.g. t-shirts.  
No see-through clothing especially blouses.  
No short or low cut tops.  
Brassieres must be worn at all times.  
Petticoats are compulsory.  
No make-up is allowed.  
Learners need to come to the hostel after weekends with no make-up or jewelry on.
- Girls should be dressed in modest apparel as a Godly Christian Lady.
- No clothing of a provocative nature may be worn.
- Supervising staff will confiscate all articles of clothing and jewelry which are considered improper.
- No high heel shoes – the length not to exceed 3cm high. (church and leisure wear).

Learners may not lend or borrow clothing, nor may they sell their clothing to other learners or to any staff member.

### Weekends – Signing out

- Learners must be properly signed out and receive a Gate Pass to hand in at the security check point.
- Parents must give written permission for their child to spend the weekend with someone else. Both parties (both learners' parents) must send written permission for "sleep-overs".
- Only parents or persons authorized by the parents may sign a child out for weekends or holidays. No telephonic authorization will be accepted. Only a written message is acceptable (fax or e-mail). This must be send to the school by the Thursday preceding the weekend.
- Boarders must return to the hostel **not later than 18:00 on a Sunday evening** and on the day before the school re-opens for the new school term.  
This rule must be strictly adhered to.
- No boarder may sign themselves out.
- No learner will be allowed to go home by public transport unless accompanied by parent/guardian. Parents must give written permission in advance for a learner to go home by public transport by him/herself.
- Children will not be permitted to hitch-hike home on weekends and holidays.
- Learners can be collected on a Friday at 14:15.
- All learners must go home on a long week-end. **It is a compulsory week-end off.**

### End of Term

- Parents are requested to ensure learners are able to leave as soon as possible after school closes on the last day of the term. Learners must clear their rooms of all personal possessions.
- Learners must have left the Hostel by 18:00.

## COMBINING SPIRITUAL AND ACADEMIC ..... BUILDING A FUTURE FOR OUR CHILDREN!

### Valuables

- Valuables including, money, must be handed in for safekeeping.
- Learners must please hand in their money at the supervisor from where they can “draw” on a regular basis.
- Learners must preferably not bring expensive and designer clothes, shoes and “tekkies” to the hostel.
- No Cellular Phones, **NO CELLPHONES**. No cell phones allowed on the hostel, school and church premises.

### Medication

- Parents are advised not to put learners with serious medical conditions and or mental and personality disorders on the hostel.
- This includes conditions where medication must be administered on a regular basis under adult supervision and where the child must be monitored on a daily basis.
- Parents must discuss the medical condition with the principal first, before enrolling the child. Learners under psychiatric treatment should not enroll on the hostel.
- No special diets for a learner due to a medical condition e.g. diabetes.
- Parents will be informed telephonically in cases where the child is ill. It is the parents' responsibility to take the learner to the doctor.
- Learners must be in possession of their chronic medication at all times e.g. asthma pump.

### Medication can be bought over the counter:

Learners that bring these medicines and to hand in at the supervisor for safe keeping  
For Pain and Fever, For Colds and Flu, Cough mixtures, Stomach ailments, Menstrual pains (girls).

### Food

- All the learners will have to eat the food provided for that day according to the menu.
- Learners are not allowed to bring their own food for preparation or according to their own dietary requirements to the hostel.
- No special diet for individual learners. Learners with special dietary requirements cannot be accommodated on the hostel.
- No Corn Flakes, Wheat Bix, Milk, Noodles etc. allowed on the hostel.
- Learners that bring perishable food for example on Sunday evenings must eat the food in the dining hall and not in the dormitories.
- Although we fumigate the hostels every term, we cannot allow food stuffs in the hostels that will cause insects and pests e.g. cockroaches. We need to adhere to safety and health regulations.

### Vandalism / Breakage

- Parents will be informed when children damage hostel and/or school property.
- Cost of repairs and/or replacement will be claimed form parents.
- If not paid soon, your child could be expelled from the hostel until the account is settled.
- Parents should pay the amount in cash. If the money is not received, the hostel account will be debited with the amount due.
- Vandalism and Malicious damage of property is a serious offence.

### Church services

- It is compulsory for all learners to attend church services and other religious activities.
- Church services are held on a Wednesday evening, Sunday morning, once a month on a Saturday afternoon. Special services are arranged occasionally – it is compulsory for learners to attend all the scheduled services and religious activities. The Young People (youth) arrange activities (spiritual and leisure) over weekends. Hostel learners are compelled to attend if it is on the school/hostel premises. Parents need to give permission for off-campus activities.
- A special religious/spiritual program is followed on a Saturday evening.

### Weapons and drugs

- No dangerous weapon i.e. knives or firearms are allowed on the hostel or school grounds. If we do find it, we will contact the SAPD immediately.
- No drugs or drug peddling allowed.
- If a child is found with dagga or drugs, the staff at the school or hostel will immediately lay a complaint at the SAPD against the learner.
- The SA Schools Act regulations are applicable with regards to safe schools.

### Radio, CD Player, MP 3 Player, Walkman, iPod

- No radio, CD player, MP 3 player, Walkman or any other electronic device are allowed on the hostel.

### Cellular Phone

- **No cellphone allowed on the school/hostel premises.**
- Learners to make phone calls during the allotted time slots. A pay phone is available for this purpose.

### Selling of Goods

- No selling/buying (trading) of any kind of goods allowed.
- Learner to support the school's tuck shop.
- No money lending scheme allowed.

### Pocket money

- Boarders are encouraged to open savings accounts for their own convenience.
- Boarders who keep large amounts of money on their person or in lockers, do so at their own risk. Pocket money must be handed in on arrival for safekeeping.
- The Principal and staff will not accept responsibility for, or take action to recover, money stolen in the hostel.
- Disciplinary Procedures will be followed towards the thief.

### **\*\*\* IMPORTANT NOTICE \*\*\***

- **Parents please open a Savings account for your child [for their own convenience] to be used for pocket money, excursions money etc.**
- **Please do not pay money into any teacher or staff member's bank account.**
- **The school account should only be used for school and hostel fees.**

## DAILY ROUTINE

A bell will be used to indicate the starting time of the different events.

### Morning

05:30	Rise from bed
05:30 – 05:40	Devotion – Prayer and Bible reading
05:40 – 06:45	Wash and dress, make up the beds, clean the room
06:45 – 06:50	Line up at Dining Hall
06:50 – 07:15	Breakfast
07:25	Learners to go to school
07:30 – 14:35	No learners allowed in the hostel
10:40	Collect sandwiches at the dining hall (first break)

### Afternoon

14:35 – 15:00	Lunch & leisure time
15:00 – 17:00	Homework study time
17:00 – 17:30	Leisure
17:30	Learners to line up at dining hall
17:30 – 18:00	Supper

### Evening

18:00 – 19:00	Wash/Shower
	No boys or girls together after 18:00 (After supper).
19:00 – 21:00	Study time – High school learners in the study hall
	Rooms – Junior Learners
21:45 – 22:00	Prayer, Bible Reading
22:00	Lights out

Juniors can have a joint prayer session at 20:45 – 21:00

Juniors to go to bed at 21:00 where possible

**Roll call at following time:** 19:00 – Seniors in the study room  
Juniors in the rooms  
21:45 – Seniors in the rooms

### Wednesday

15:00 – 17:15	Study time (homework) in dining hall
17:30	Learners to line up at dining hall
17:30 – 18:00	Supper
19:00	Church service in Tabernacle (All learners to attend)



## WEEKENDS

### Saturday

07:30 – 07:45	Devotion
07:45 – 08:30	Wash and dress, make-up the beds, clean the room
08:30 – 09:00	Breakfast
09:00 – 12:00	Study session / Washing of clothes
12:00 – 13:30	Leisure
13:30 – 14:00	Lunch
14:00 – 17:45	Leisure, sport activities
17:30 – 18:00	Supper
18:00 – 19:00	Wash/shower
19:00 – 21:00	Young people's program
21:00	Learners to be in their respective dormitories
21:45 – 22:00	Prayer, Bible Reading
22:00	Lights out

\*\*Combine weekends – Supper to be serviced before the evening service  
All learners to attend the combine church service

### Sunday

07:00 – 07:15	Devotion
07:15 – 08:30	Wash and dress, make-up the beds, clean the room
08:30 – 09:00	Breakfast
09:00 – 09:30	Learners prepare for church service
10:00	Church (all learners to attend the church service)
13:30 – 14:30	Lunch
14:30 – 17:45	Leisure
17:45 – 18:00	Supper
18:00 – 19:00	Wash/shower
19:00 – 21:00	Homework session
21:00	Learners to be in their respective rooms
21:45 – 22:00	Prayer, Bible Reading
22:00	Lights out

## HOSTEL FEES PAYABLE

- **Registration Fee : R900**  
Payment of R900 registration fee secures place in the hostel.
  
- **Hostel Fees : R22 800 per annum**
- Hostel fees can be paid on an installment basis namely:  
**R7 600 per term X 3**  
(R7 600 X 3 terms = R22 800 p.a.)

**[ 3 INSTALLMENTS PER YEAR – paid over 3 terms ]**  
**## Payments must be made per term and not monthly. ##**

Hostel Fee account of R7 600 must be **paid-up by the 3<sup>rd</sup>** of the first month in each new term namely:

**Due dates: 3<sup>rd</sup> January 2020**  
**3<sup>rd</sup> April 2020**  
**3<sup>rd</sup> July 2020**

### **PLEASE NOTE:**

- Learner will be charged for a full month if he/she starts during the month.
- Hostel fee calculated at R2 500 per month to determine the amount due if learner leaves the hostel during the term.
- One month's notice must be given when the learner is taken out of the hostel. Please submit a withdrawal notice in writing.
- Refund will only be paid out if the parent gives one month's written notice.
- **No Refund in the 4<sup>th</sup> term.**

### **Breakage and or Vandalism**

- If the learner breaks or damage school, church or hostel property, the parent will be liable for the replacement and or repair cost.
- The parent will be informed about the incident.
- The learner's hostel fee / school fee account will be debited with the amount of the replacement/repair cost if the parent does not pay.

# Registration Requirements

**The following are required upon the return of your application forms:**

<b>CHECKLIST</b>			
	<b>ITEM</b>	<b>YES</b>	<b>NO</b>
<b>1</b>	Fully completed Application/registration forms		
<b>2</b>	A non-refundable application /registration fee of <b>R1000</b>		
<b>3</b>	Two recent Passport photos of your child		
<b>4</b>	Copy of your child's Birth certificate/ID		
<b>5</b>	Copy of your child's Immunization Card		
<b>6</b>	The most recent School Report (Original when available)		
<b>7</b>	Transfer Card (when available @ end of year)		
<b>8</b>	<b>Copy of both parents/guardians ID's</b>		
<b>9</b>	Contact details of parents		
<b>10</b>	Water and electricity statement to proof postal address		
<b>11</b>	Contact details, telephone numbers and postal address of person responsible for payment of the account		
<b>12</b>	Contact details of next of kin		
<b>13</b>	Medical Aid details – Copy of medical aid card		
<b>14</b>	Both parent(s) and learner must avail themselves for an interview		
<b>15</b>	Please arrange for a stop order in favour of the school to pay the school fees		
<b>16</b>	Academic & Behaviour Reference Form ( <b>compulsory</b> )		
<b>17</b>	Pastor's reference Form ( <b>compulsory</b> )		
	<b>Please ensure that you read the:</b>		
<b>A</b>	Code of Conduct		
<b>B</b>	Financial Policy		
<b>C</b>	Religious Policy		
<b>D</b>	Prospectus 2020 (Information Brochure) Study the document to acquaint yourself with all the official <b>Policies, Rules &amp; Regulations</b> of the school.		
	<b>1st school day</b>		
<b>i</b>	<b>Learner must have:</b> Prescribed School Uniform		
<b>ii</b>	All the required stationery		
<b>iii</b>	All the required textbooks/ <b>e-Books</b> on The Tablet		
<b>iv</b>	10.1" Tablet with Stylus - Samsung TAB A ( <b>Recommended</b> )		

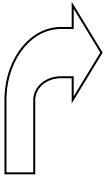
## Location

El Tabernacle Christian College is a Private Christian School which is situated on a 4 hectare site in Apple Orchards in Walkerville. The School is adjacent to the national road R82 (Johannesburg – Vereeniging road), ± 10 km from the Grasmere Toll Plaza and within easy reach from Ennerdale, Evaton, Meyerton, Sebokeng, Savannah City, Vereeniging and Johannesburg.

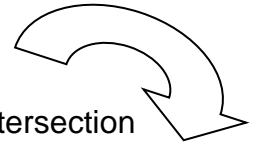
East of Ennerdale, West of Meyerton, South of Johannesburg, North of Vereeniging.

## Contact Details

- Physical Address** : Plot 84  
Road No. 8  
Homestead Apple Orchards  
Walkerville
- Postal Address** : PO Box 1418  
Walkerville  
1876
- Telephone number** : 076 272 7392 (office hours)  
071 695 3079
- Accounts Department:** 082 575 1222 Bookkeeper – statements  
082 575 1222 Arrears – debt collection
- E-Mail** : eltabernacle @ easyweb.co.za
- Fax number** : 086 532 2819
- Website** : [www.eltabernaclechristiancollege.co.za](http://www.eltabernaclechristiancollege.co.za)
- GPS** : S 26° 27.772' Latitude  
E 27° 55.606' Longitude

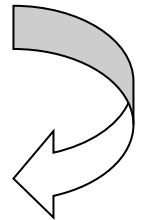


# DIRECTIONS TO EL TABERNACLE CHRISTIAN COLLEGE APPLE ORCHARDS, WALKERVILLE



**(A) From Johannesburg ± 25 km from South Gate**

1. Pass Gold Reef City; Take the **R82 Vereeniging** at the Uncle Charlies Intersection
2. Pass **South Gate Shopping Centre** (JHB) on your right hand side. ± 25 km from
3. Proceed pass Kibler Park & Eikenhof, follow the new road pass Walkerville town.
4. **OR** Continue from the center of Walkerville (Shopping centre at your left). At the 4 way stop proceed towards Vereeniging on the R82 (± 7km).
5. Proceed pass Ohenimuri on your right hand side.
6. Proceed pass the Grassmere R557 turn off.
7. Between 3<sup>rd</sup> and 4<sup>th</sup> Road you will be able to see the complex through the trees.
8. Take a right turn into Road 4 (a short uphill), current turn-off to Savannah City.
9. Proceed and turn right into Road 8.
10. Proceed for 400m until you see the building. Thatch roof entrance.

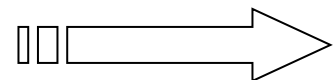


**(B) From N1 – GRASSMERE Toll Plaza (Cement Highway & Golden Highway) ± 10km**

1. **Turn east** at the robots / off ramp – road from Ennerdale
2. At the T-junction **turn left - north**. (JHB / Randvaal / Walkerville / Meyerton).
3. Proceed for ± 200m at the first crossing **turn right - east**.(at Weilers Farm Informal Settlement).
4. Pass Weilers Farm and ±4km later **Spioenkop NG Church** on your left
5. Proceed pass 6<sup>th</sup> and 7<sup>th</sup> Road
6. Turn right into 8<sup>th</sup> Road and proceed for 2km tarred road and ±800m gravel section in the road until you see the building on your left. Thatch roof entrance.

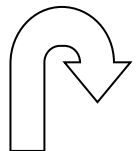
**(C) From Vereeniging ± 25km**

1. Take Voortrekker / Old JHB Road ( **R82**)
2. Proceed pass Rus-ter-Vaal, Roshnee, Dadaville.
3. Proceed through De Deur
4. Pass Fred's Hardware on your right – Through tall trees on both sides of the road.
5. The road goes down a short downhill section.
6. Take first left hand turn into Road 4. Short uphill section.
7. Proceed and turn right into Road 8.
8. Carry on straight for 400m until you see the building. Thatch roof entrance.



**(D) From R59 Alberton Highway ± 10km (Meyerton)**

1. Take the Johan Le Roux off-ramp in Meyerton
2. Turn west into De Deur / Evaton Road (Johan Le Roux) Proceed for ±7 km
3. At the T-junction R82. Old JHB (Main) Road. Turn right towards Walkerville / JHB



<p><b>For Assistance Please Phone</b>  <b>Rene</b> : 076 272 7392  <b>Owen</b> : 072 607 6584  <b>Glen</b> : 082 417 5747</p>	<ul style="list-style-type: none"> <li>□ Plot 84, Road 8, Homestead Apple Orchards, Walkerville</li> <li>□ ± 25km From South Gate,</li> <li>□ ± 25km from Vereeniging</li> </ul>
---	--

**GPS: S 26° 27.772' Latitude E 27° 55.606' Longitude**